

# Zebra Robotics Automation™

## Fetch100 Roller AMR

Increase efficiency and productivity with autonomous mobile robot (AMR) solutions designed for flexibility and safety from Zebra





## Fetch100 Roller

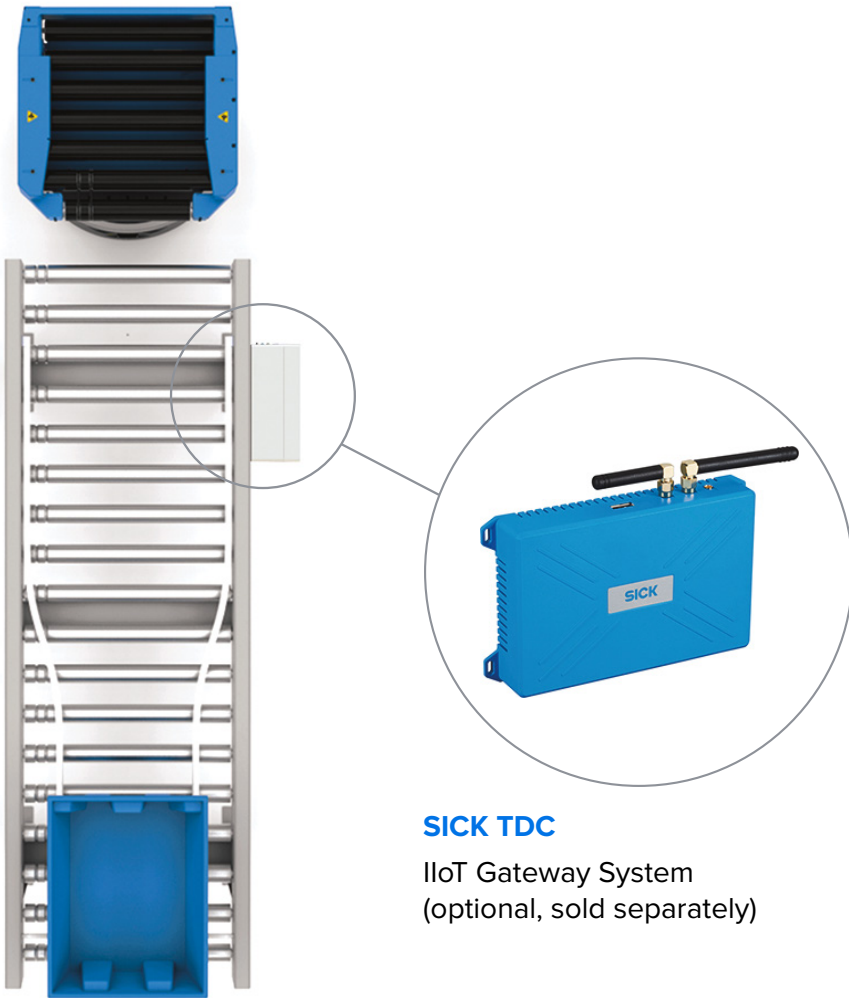
Flexible Automation Addition  
to Fixed Conveyors

### Key Benefits

- Automate loading and unloading of totes and bins from conveyors or ASRSs
- Flexibly extend existing conveyor workflows
- Automatically trigger induction or deduction via Zebra Symmetry<sup>®</sup> software
- Integrate existing conveyor controls with Symmetry using optional IIoT smart gateway

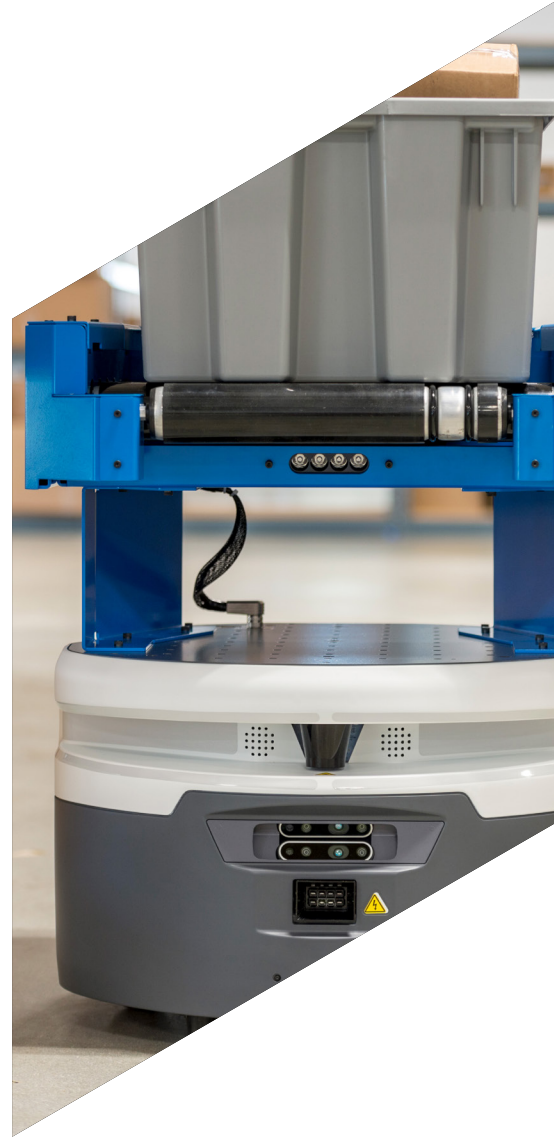
## SICK TDC Smart Gateway

The SICK Telematic Data Collector (optional, sold separately) is a networked industrial I/O device that serves as a bridge between the Zebra Symmetry™ and other industrial equipment such as conveyors, doors and air showers. Automate hand-offs between Fetch100 Roller robots and active powered conveyors by connecting a SICK TDC to any conveyor controller.



### SICK TDC

IIoT Gateway System  
(optional, sold separately)



## Coexist with Current Conveyor Infrastructure

Conveyor systems have dramatically increased industrial efficiency for many years. However, these fixed assets are hard to adapt to today's ever-changing material transport requirements. Zebra's Fetch100 Roller solution brings adaptability and increased levels of automation in these conveyor environments.

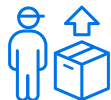


Specifications	Fetch100 Roller
<b>Weight</b>	186.2 lbs. (84.5 kg) Additional weight with riser installed: Riser 1: 5.5 lbs. (2.5 kg) Riser 2: 6.7 lbs. (3.0 kg)
<b>Supported Conveyor Heights</b>	18 in. (45.7 cm) or 22.75 in.–30 in. (57.8 cm–27.2 cm) in 0.25 in. (6.35 mm) increments
<b>Maximum Payload</b>	Up to 176 lbs. (80 kg) (depends on configuration)
<b>Base Footprint</b>	23.6 in. (59.9 cm) length, 21.7 in. (55.1 cm) width
<b>Cargo Dimensions</b>	20.6 in.–32.7 in. (52.3 cm–83.0 cm) (depends on riser height)
<b>Maximum Speed</b>	3.9 mph (1.75 m/s)
<b>Turning Radius</b>	Turn in place
<b>Nominal Continuous Runtime</b>	~9 hrs
<b>Environment</b>	Indoors
<b>Charging</b>	Autonomous docking
<b>Charge Time</b>	3 hrs to 90%
<b>2D Laser Sensor</b>	SICK, 82 ft. (25 m), 220°
<b>3D Camera</b>	Yes (x2)
<b>CE, ANSI/RIA R15.08, and UKCA compliant</b>	

## Key Workflows



Order  
Picking



Assembly  
and QA



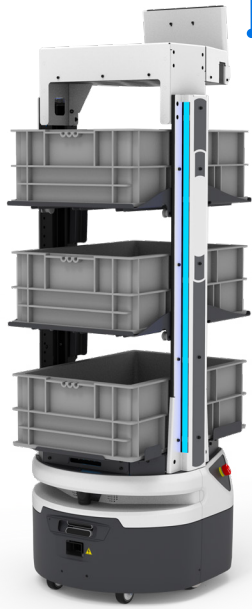
End of Line  
Handling



ASRS  
Induction



Rush  
Orders



### Fetch100 Flex Series

Optimize fulfillment operations with intelligent, flexible automation



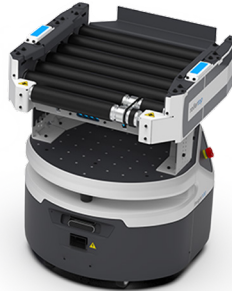
### Fetch100 Connect

Automatically pick up and drop off carts up to 125 lbs. (57 kg)



### Fetch100 OEM Base

Build your own customized automated solution on a proven platform



### Fetch100 Roller

Integrate with current conveyor infrastructure



### Fetch100 Shelf

Transport packages, totes and bins up to 172 lbs. (78 kg)



**WARNING:** This product uses components which emit invisible laser radiation. Incorrect use or observing the safety laser scanner through optical instruments (such as magnifying glasses, lenses, telescopes) may be hazardous for the eyes.



Zebra AMRs carry a CE mark and meet regulatory requirements for product safety.

**ANSI/RIA R15.08**

Zebra AMRs conform with R15.08 safety standards published by the RIA (Robotics Industry Association)

NOTE: Product appearance is subject to change

Discover how Zebra Robotics Automation can work for you—  
scan or click the QR code for more information



NA and Corporate Headquarters | +1 800 423 0442 | [inquiry4@zebra.com](mailto:inquiry4@zebra.com)

EMEA Headquarters | [zebra.com/locations](http://zebra.com/locations) | [contact.emea@zebra.com](mailto:contact.emea@zebra.com)

ZEBRA and the stylized Zebra head are trademarks of Zebra Technologies Corp., registered in many jurisdictions worldwide. All other trademarks are the property of their respective owners. ©2023 Zebra Technologies Corp. and/or its affiliates. 08/23/2023.